








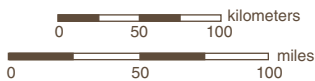
National Petroleum Reserve-Alaska



Location Map

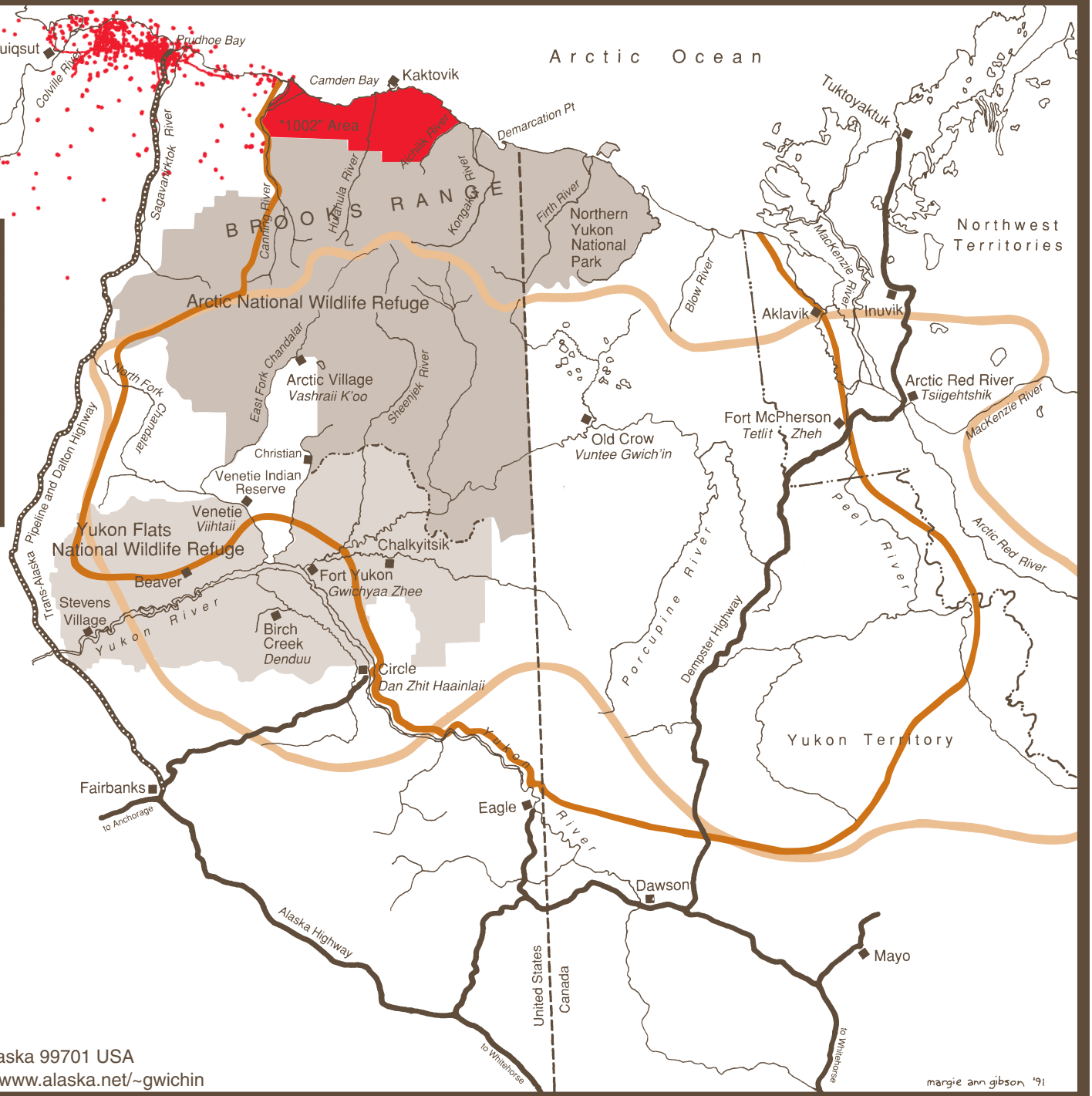
# Primary Habitat of the Porcupine Caribou Herd

-  Traditional Homeland of the Gwich'in Indians
-  Range of the Porcupine (River) Caribou Herd
-  "1002" Area  
Coastal Plain of the Arctic National Wildlife Refuge
-  National Park and Wildlife Refuges
-  Oil Fields and Wells



## Gwich'in Steering Committee

122 First Avenue, Box 2 • Fairbanks, Alaska 99701 USA  
 (907) 458-8264 • Fax (907) 457-8265 • [www.alaska.net/~gwichin](http://www.alaska.net/~gwichin)



margie ann gibson '91